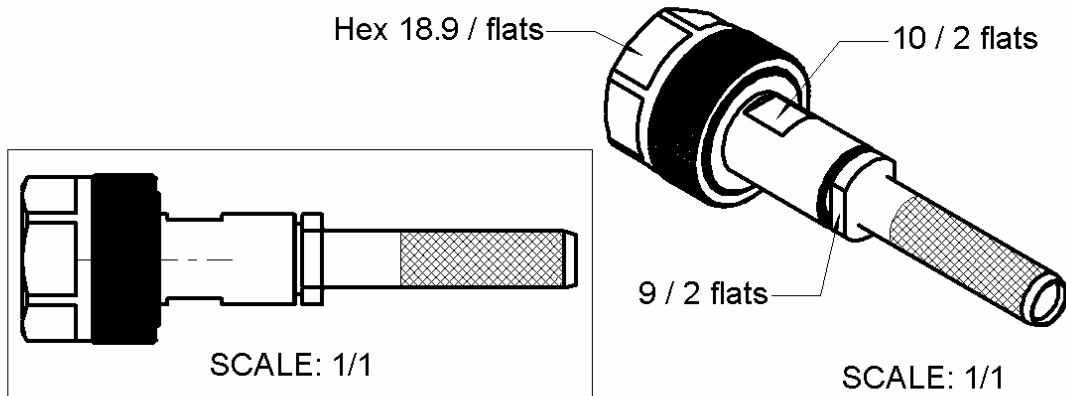
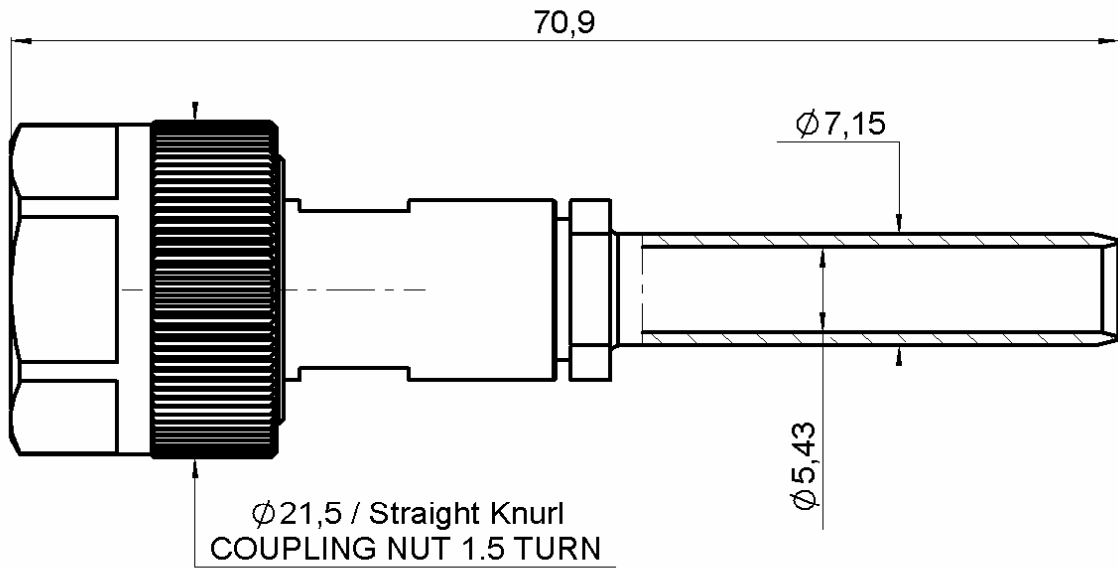


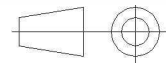
STRAIGHT PLUG SPECIAL NUT SOLDER TYPE
CABLE MHD 142

R163.064.141

Series : N-18



All dimensions are in mm.



COMPONENTS	MATERIALS	PLATING (µm)
BODY	STAINLESS STEEL	PASSIVATION
CENTER CONTACT	BRASS	.GOLD 1.3 OVER NICKEL 2
OUTER CONTACT	-	-
INSULATOR	ULTEM	-
GASKET	FLUOROSILICONE + SILICONE RUBBER	-
OTHERS PARTS	BRASS	GOLD 0.5 OVER NICKEL 2
-	-	-
-	-	-

Issue : 0749 A

In the effort to improve our products, we reserve the right to make changes judged to be necessary.



STRAIGHT PLUG SPECIAL NUT SOLDER TYPE

R163.064.141

CABLE MHD 142

Series : N-18

PACKAGING

Standard	Unit	Other
1	-	Contact us

SPECIFICATION

ELECTRICAL CHARACTERISTICS

Impedance	50	Ω
Frequency	0-18	GHz
VSWR	1.14 + 0,0000	x F(GHz) Maxi
Insertion loss	0.1	\sqrt{F} (GHz) dB Maxi
RF leakage	- (NA)	- F(GHz)) dB Maxi
Voltage rating	350	Veff Maxi
Dielectric withstanding voltage	750	Veff mini
Insulation resistance	5000	M Ω mini

CABLE ASSEMBLY

Stripping	a	b	c	d	e	f
mm	8,00	11,0	27,0	0,00	0,00	0,00

Assembly instruction :

Recommended cable(s)
MHD142

Characteristics indicated on this data sheet are those that can be achieved with the highest performance cable. Intrinsic limitations of the cable may diminish the performance of the assembly

Cable retention

- pull off	300	N mini
- torque	NA	N.cm

MECHANICAL CHARACTERISTICS

Center contact retention		
Axial force – Mating end	300	N mini
Axial force – Opposite end	300	N mini
Torque	NA	N.cm mini

TOOLING

Part Number	Description	Hexagon
.	.	.

Recommended torque		
Mating	400	N.cm
Panel nut	NA	N.cm
Clamp nut	170	N.cm
A/F clamp nut	9,0000	mm

Mating life	5000	Cycles mini
Weight	42,6400	g

OTHER CHARACTERISTICS

ENVIRONMENTAL

Operating temperature	-55/+125	$^{\circ}$ C
Hermetic seal	IP67	Atm.cm3/s
Panel leakage	NA	

Issue : 0749 A

In the effort to improve our products, we reserve the right to make changes judged to be necessary.



RADIALL®

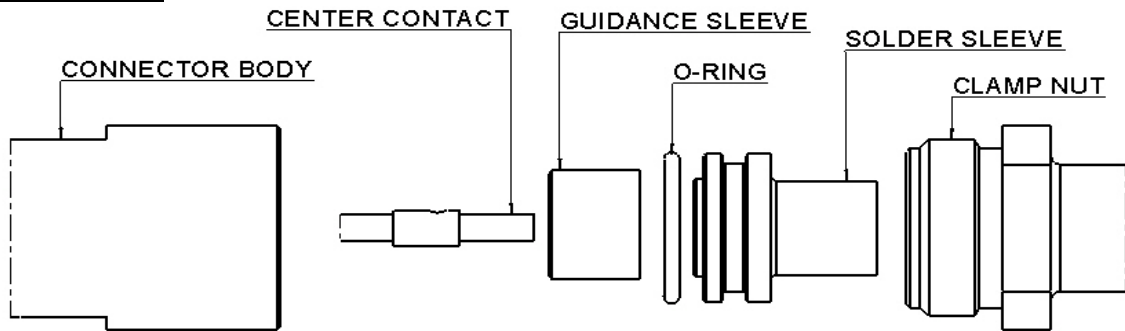
STRAIGHT PLUG SPECIAL NUT SOLDER TYPE

R163.064.141

CABLE MHD 142

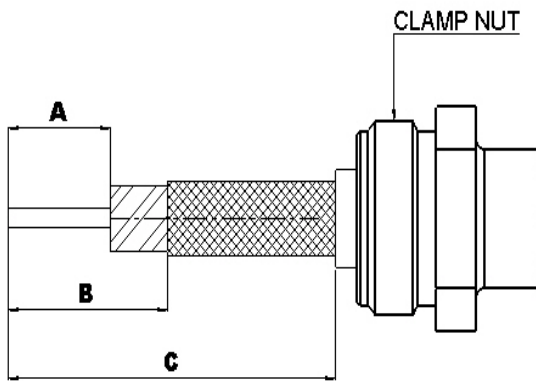
Series : N-18

COMPONENTS



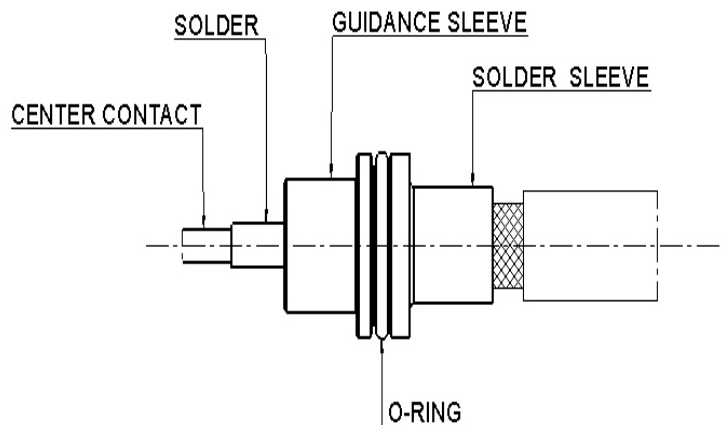
1

Strip the cable.
Slide the clamp nut onto the cable.



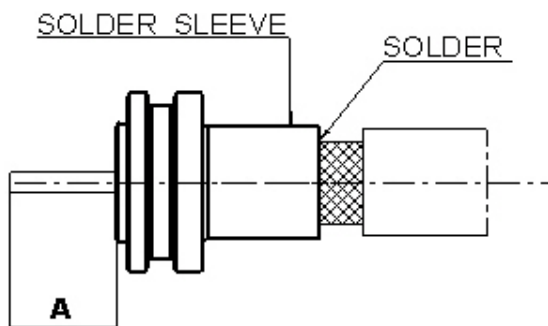
3

Mount the O-ring on the Solder sleeve .
Slide the Guidance Sleeve against the Solder sleeve and the center contact onto the inner conductor .
Solder the center contact onto the inner conductor.



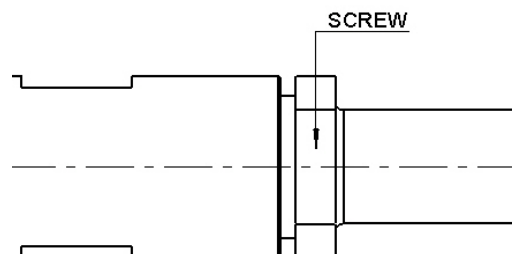
2

Slide the Solder sleeve on the cable and solder .



4

Mount the whole body into the main sub assembly and screw the Clamp nut.



Issue : 0749 A

In the effort to improve our products, we reserve the right to make changes judged to be necessary.



RADIALL®